



HOSE REELS / CORD REELS

"The GSE Problem Solvers"

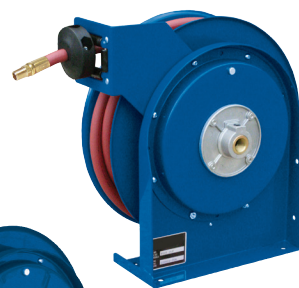
MEDIUM DUTY REELS

Model: HTRT650-OLP

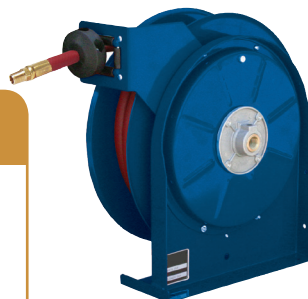
- Lighter weight, spring driven hose reel
- 3/8" x 50' low pressure (300 psi) hose included
- Drive spring is protected from the environment in a polypropylene spool
- Guide arm adjusts to seven positions



Model:
HTRT650-OLP



Model:
HT4425 OLP



Model:
HT5635 OLP



Model:
HTB5850 OLP

PREMIUM DUTY REELS

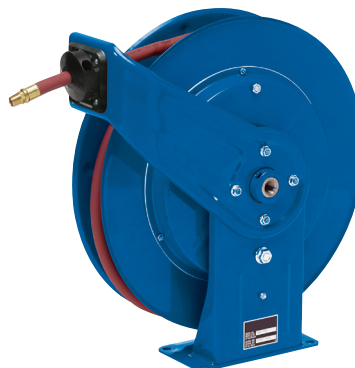
Model: HT4425 OLP / HT5635 OLP / HTB5850 OLP

- 1/4" x 25' low pressure (300 psi) hose included - HT4425 OLP
- 3/8" x 35' low pressure (300 psi) hose included - HT5635 OLP
- 1/2" x 50' low pressure (300 psi) hose included - HTB5850 OLP
- All steel construction
- Compact for a wide range of applications

HEAVY DUTY REELS

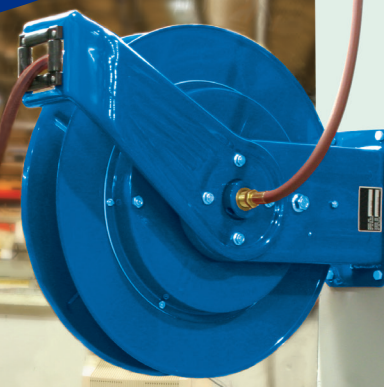
Model: HT7850 OLP

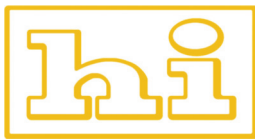
- 1/2" x 50' low pressure (300 psi) hose included
- Base and guide arm are formed from high-grade steel
- Engineered with structural forms and gussets for strength
- Guide arm adjusts to three positions



Model:
HT7850 OLP

For more information please visit us online at www.halltechservices.com, call us at 724.824.7100, or email us at info@halltechservices.com





HOSE REELS / CORD REELS

"The GSE Problem Solvers"



Model:
HTD8670 OLP

VEHICLE-MOUNT REELS

Model: HTD8670 OLP

- 3/8" x 70' low pressure (300 psi) hose included
- Cast aluminum guide arm and base for maximum strength
- Incorporates a heavy, double adhesive sided spring case gasket
- Guide arm is field adjustable

PRESSURE WASH REELS

Model: HTPW7650 OHP

- 3/8" x 50' high pressure (4800 psi) hose included
- Quality steel construction
- Incorporates a nickel-plated, carbon steel Aflas® sealed swivel
- Components are individually powder-coated for maximum corrosion resistance



Model:
HTPW7650 OHP

LIGHT CORD REELS

Model: HTL 4050 162 2

- 50' 16/2 cord with flourescent light
- Supplied with 5' pigtail and three-prong plug
- Durable shock absorbing lamp holder
- Shatter-resistant tube with switch
- UL Listed at 125 volt 60 HZ single phase
- Indoor non-weather tight applications only



Model:
HTL 4050 162 2



For more information please visit us online at www.halltechservices.com, call us at 724.824.7100, or email us at info@halltechservices.com

